

C O R E H I S T O L O G Y S O L U T I O N S

# HistoCore PELORIS 3

PREMIUM TISSUE PROCESSING SYSTEM

Advancing Cancer Diagnostics  
Improving Lives

**Leica**  
BIO SYSTEMS

# FOUNDATION FOR SUCCESS

The HistoCore PELORIS 3 seamlessly adapts to your incoming workflow demands without compromising tissue quality. World-leading processing times, unmatched protocol flexibility, and an intuitive design help enable laboratories to provide same-day results to pathologists.

Combined with advanced safety features, protecting both your laboratory and patient samples, the HistoCore PELORIS 3 will become your foundation for high-quality results; every time.

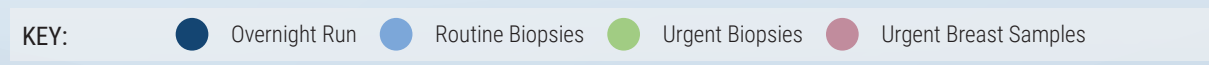




# YOUR SCHEDULE, YOUR WAY

Load and unload cassettes on your schedule, not the instrument's. The unique dual-retort design, short cycle times and flexible protocols give you the flexibility to establish and adapt a workflow to meet the demands of your laboratory every day.

Urgent biopsies coming in? A validated 1 hour rapid protocol has your back. Breast samples ready for diagnosis within the same day? No problem, thanks to an optimized 5 hour fatty tissue protocol.



# HIGH-QUALITY RESULTS; EVERY TIME

A magnetic impeller in each retort generates a reagent vortex to actively accelerate processing through rapid and even-heating, as well as active reagent distribution.



**THE ACTIVFLO SYSTEM**  
provides ideal processing  
conditions for all tissues.

Combine with validated

**ACTIVFLO CASSETTES**

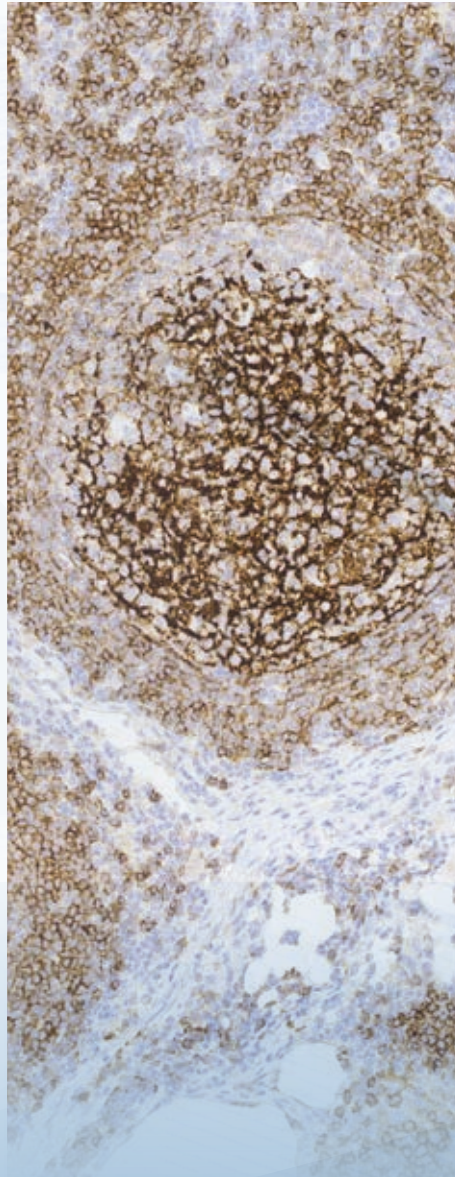
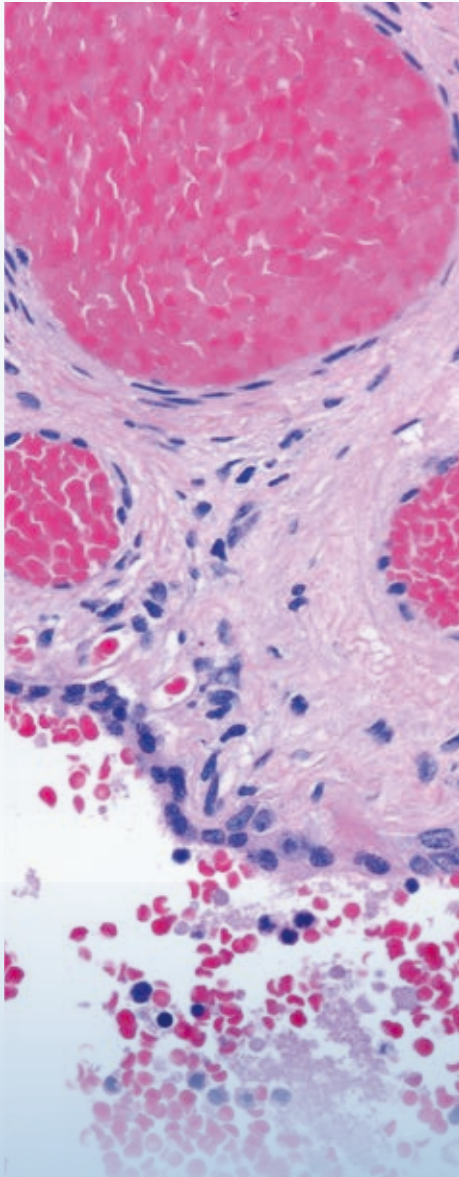
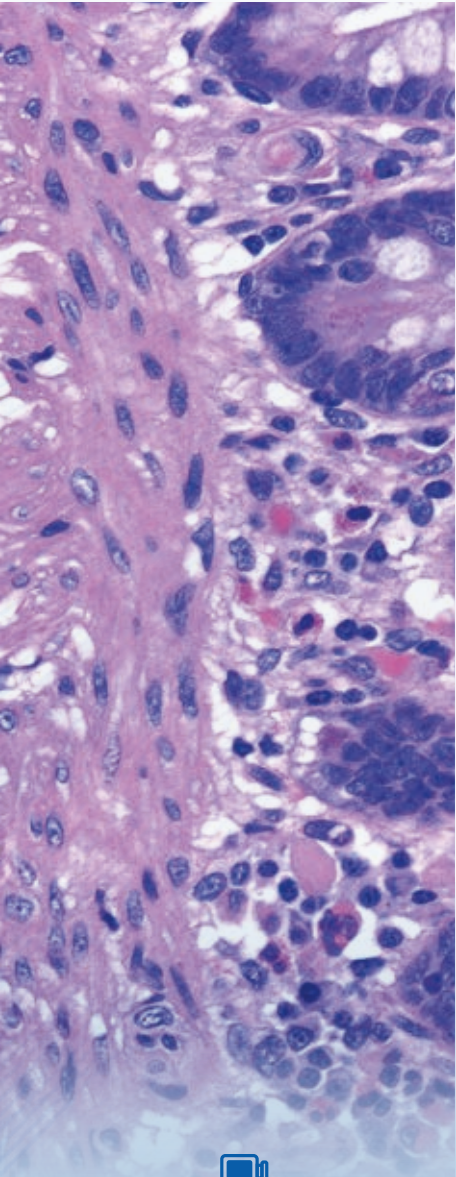
which  
drain up to

**23**



more efficiently than  
standard cassettes.





# FOUNDATION FOR CRISP, CLEAR STAINS

Histology workflows rely on efficiently fixed, processed and stained samples to enable reliable analysis. Optimal tissue processing conditions for each tissue type on the HistoCore PELORIS 3 lay the foundation for smooth downstream applications and the crisp, clear stains pathologists look for.

## *Staining (left to right):*

- » HistoCore SPECTRA H&E S1 Stain System, Gastrointestinal Tract
- » HistoCore SPECTRA H&E S2 Stain System, Placenta
- » BOND Staining Platform, CD23 Chronic Lymphocytic Leukemia

# CONFIDENCE IN YOUR RESULTS

Advanced safety features enable your laboratory to automatically track and trace each step of the tissue processing workflow, minimize the risk of reagent change errors, and protect your laboratory from cyberattacks.

The HistoCore I-Scan technology captures each cassette individually, including cassette ID, quantity and color. Use the scanner as well to capture the basket ID, individual user ID's, and reagent information.



## ADDED CYBER SECURITY

including Anti-Malware Protection with Windows® Defender and whitelisting detection.



## TWO BUILT-IN DENSITY METERS

monitor reagent changes and alert users if there's an incorrect concentration to protect the integrity of the tissue.





HISTOCORE PELORIS 3  
**optimizes** the lab's footprint  
by up to

**55%** ↓

compared to other  
single-retort instruments.

# BENEFITS OF DUAL RETORTS

Compared to two single-retort tissue processors a dual-retort instrument saves valuable lab space. Furthermore, it allows laboratories to reduce tech time and optimize reagent consumption, enabling laboratory managers to run a cost-effective lab.

Histocore PELORIS 3  
857 x 721 x 1500 mm  
(59 x 33.7 x 28.4 in)

Competitor A  
(2 Instruments  
Side by Side)

Competitor B  
(2 Instruments  
Side by Side)

## HISTOCORE PELORIS 3

**reduces** lab tech  
maintenance time  
by up to

**72%** ↓



and optimizes  
**reagent costs**  
by up to

**46%** ↓

## PELORIS PARABLOCKS

improve your workflow  
by **melting**  
by up to

**21%** ↑

**faster** than pellets.

Reference:

- » *Leica Biosystems Case Study Optimizing Automated Tissue Processing Efficiency to Reduce Cost*

# HISTOCORE PELORIS 3 TISSUE PROCESSOR

## SYSTEM SPECIFICATIONS

Instrument dimensions (h x w x d)	1500 x 857 x 721 mm (59 x 33.7 x 28.4 in)
Weight	331 kg (730 lbs) dry, 430 kg (948 lbs) full reagent load
Processing modes	Conventional (Xylene), Xylene-free
Cassette capacity	600 (maximum), 4 32 (spaced/xylene-free)
Retort	2 (allows for continuous processing)
Heating system	ActivFlo, non-microwave, rapid heat
Reagent station	16
Reagent volume	3.8 L (1 US gal) minimum 5 L (1.32 US gal) maximum
Paraffin wax stations	4 (each station is capable of filling one retort)
Paraffin melt time	5 hr pellets, 3 hr Parablocks
Reagent management	Concentration, cassettes, days, cycles
Operating voltage	100 to 120 V~ 220 to 240 V~
Operating current (maximum)	16 A (100 to 120 V~) 10 A (220 to 240 V~)
Mains frequency	50/60 H
Power consumption	1450 W (100 to 120 V~) 2150 W (220 to 240 V~)

## HISTOCORE I-SCAN SPECIFICATIONS

Dimensions	174.5x64x38.8 mm
Weight	235g approx.
Buttons	1) Fill-in LED on/off button 2) Scanning/Photographing trigger button 3) Tick button

## HISTOCORE I-SCAN FOR USE WITH HISTOCORE PELORIS 3

The HistoCore I-Scan scanner enables laboratories to scan 1D/2D barcodes and capture images via an integrated camera and barcode scanning engine. The scanner has an integrated TFT LCD to indicate device mode (scan/camera) and status. A USB cable connects the HistoCore I-Scan to the master instrument for power supply and data transfer. Three buttons on the device help control the scanner, the device mode is set by the master instrument.



## FOR IN VITRO DIAGNOSTIC USE

The HistoCore PELORIS 3 Premium Tissue Processing System from Leica Biosystems may not be available for use in your country. Please contact your Leica Biosystems representative for more information.

Copyright © 2023 Leica Biosystems, a division of Leica Microsystems Inc. All Rights Reserved. LEICA and the Leica logo are registered trademarks of Leica Microsystems IR GmbH. HistoCore PELORIS 3, HistoCore I-Scan, PELORIS Parablocks and HistoCore SPECTRA are trademarks of the Leica Biosystems group of companies in the USA and optionally in other countries. Other logos, product and/or company names might be trademarks of their respective owners.



57 Australian  
Export Awards  
2019 NATIONAL WINNER

Winner  
2018 VICTORIAN  
MANUFACTURING  
Hall of Fame Awards

**Leica**  
BIOSYSTEMS